



Specification.
Non-Ferrous.



In the Recycling Business **since 1888.**



RIMECO is a 5th generation, family owned company with a solid history of innovation and expertise. As a reliable and flexible partner, we provide our customers with quality products and individual, quick service, 24/7.

At RIMECO, we are committed to walking the talk and to maintaining our position as a global market player. More than 130 years of experience has given us a deep knowledge of the market and an extensive network, which we make available to you - for your benefit.

Besides trading quality raw materials, we plan, handle and execute large and small recycling projects solo or in partnerships. In any case, we promise you best-in-class products, clear communication, personal engagement, and goods delivered on time.

Our head office is located in Aabenraa, Denmark, with several facilities in Scandinavian. We work with the most experienced and skilled partners that meet our high standards.

Take a look at our products and services to see what we can do for you.

Aluminum Arisings



Fraction:
Aluminum

Description:
Al

Description

- Extrusions
- Plate
- Sheet
- Cast
- Beverage Cans
- Wheels
- Foil
- Clip
- Fence
- Gates
- Alloy 6061, 6063, 5052

Refer to points A) and B) of the general conditions.

Brass Arisings



Fraction:
Brass

Description:
MS

Description

- Red Brass
- Yellow Brass
- Automobile Radiators
- Hard Brass Castings
- Ornaments & Valves
- Rod Brass
- Aluminum Brass Recycling

Refer to points A) and B) of the general conditions.

Copper Arisings



Fraction:
Copper / Brass

Description:
Cu

Description

- Wire
- Pipes & Tubes
- Electrical Wire
- Sheet Copper
- Misc. Household Copper
- Plumbing Pipe
- Plate or bars
- Fittings
- Insulated wire
- Decorative items

Refer to points A) and B) of the general conditions.

Cables



Fraction:
Cables

Description:
CuFe

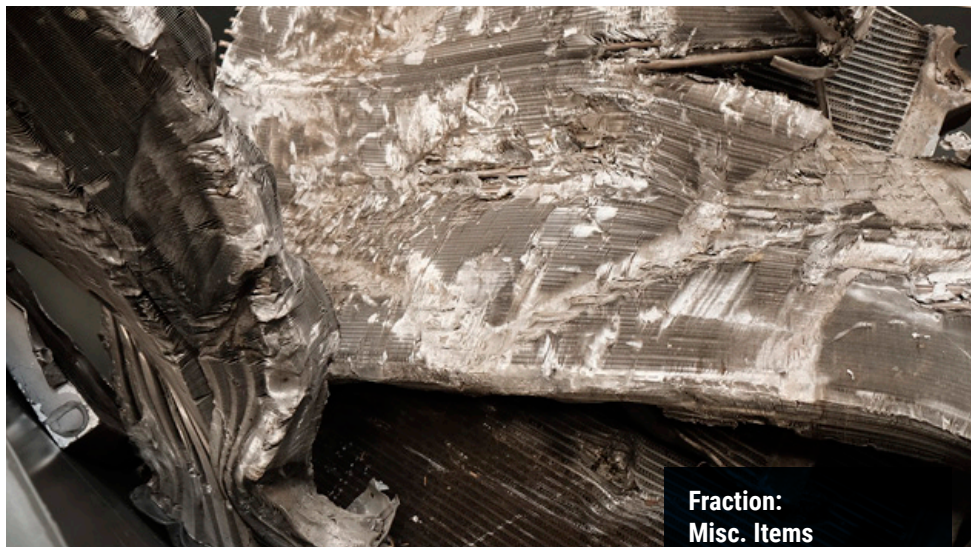
Description

There are a range of different cable types out there, including (but not limited to):

- Household cables
- Tinned copper cable
- ACSR aluminum cable
- Data cable
- Coax cable
- Low Grade cable
- Armored cable
- Single core cable
- Lead copper cable
- Aluminum cable
- Clean and PVC Pyro

Refer to points A) and B) of the general conditions.

Misc. Items



Fraction:
Misc. Items

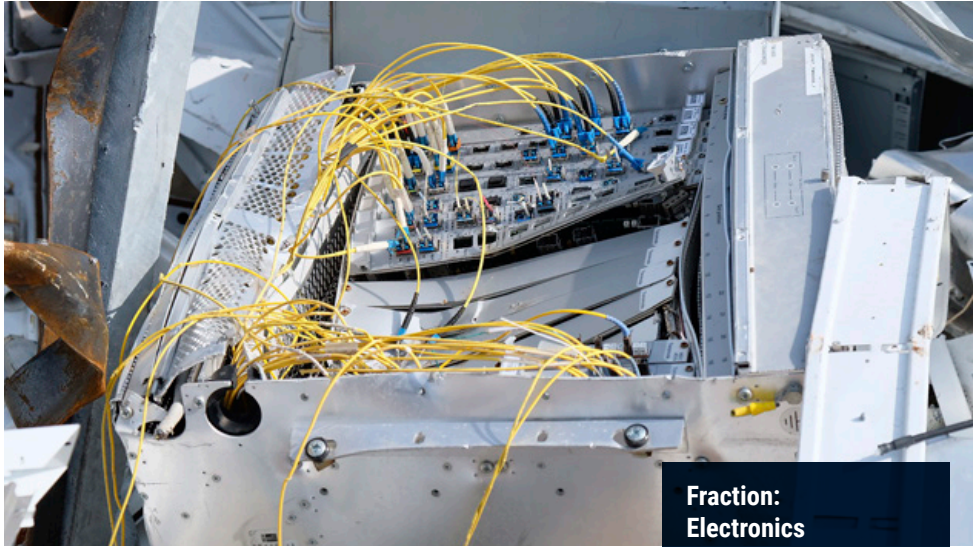
Description:
Samix

Description

- Alternators
- Ballasts
- Carbide
- Compressors
- Converters
- Electric Motors
- Starters
- Transmissions
- Radiators

Refer to points A) and B) of the general conditions.

Electronic Scrap



Fraction:
Electronics

Description:
E-Scrap

Description

- Computer Towers
Complete (no monitors)
- Types of E-Scrap
- CPU Chips (Ceramic & Plastic)
- Finger Cards
- Hard Drives
- Memory Cards (Gold & Silver)

Refer to points A) and B) of the general conditions.

Lead



Fraction:
Lead

Description:
Pb

Description

- Clean any form
- Wheel Weights

Refer to points A) and B) of the general conditions.

Lead Gel Batteries



Fraction:
Lead Gel Batteries

Description:
Bat.

Description

- Lead Acid Batteries

Refer to points B) and C) of the general conditions.

The Making of an International Recycling Company

Since 1888 RIMECO has held a solid position in the recycling trade and remains one of the larger recycling businesses in Scandinavia. The combined historical experience and current activities of the company make it a strong player in future international recycling business.

FOUNDATION

RIMECO can be traced back to 1888, when the Riggelsen family founded a trade and recycling business. The name RIMECO was created in July 1988 when our domestic recycling activities were sold.

EXPANSION

Following the death of Peter Fr. Riggelsen (1884-1951), the company was converted into a shareholding company, P. Riggelsen A/S, which was owned by his two sons Hans Mathias Riggelsen (1923-1977) and Peter Riggelsen senior (1927-2005). H.M. Riggelsen managed the Toender branch and from 1951 Peter Riggelsen senior managed the Aabenraa branch.

A large crane is shown unloading scrap metal from a ship's hold onto a pile on a barge. The crane is a white lattice boom crane with a long reach. The ship's hull is visible on the left, and a large pile of scrap metal is on the right. The scene is set on a body of water, likely a harbor or a river. The image is in black and white, with a dark overlay on the left side where the text is located.

INTERNATIONALISATION

- In 1975, Peter Riggelsen (1951 -), son of Peter Riggelsen senior and the fourth generation of the family business, joined the company and started the international era of the family company.
- In July 1988 when our domestic recycling activities were sold, the focus was to develop the international trading activities, which today has lead us to the solid foundation in Scandinavia, Baltic states and Russia.
- In July 2005 the company was sold partly to the german company group ELG Haniel, who became shareholder in 2011.
- In July 2012, Klaus Peter Riggelsen, the fith generation (1976 -) became shareholder and owner of RIMECO in accordance with a agreement wih ELG Haniel. The future is set for expansion of the RIMECO Group.

Zinc Scrap



Fraction:
Zinc

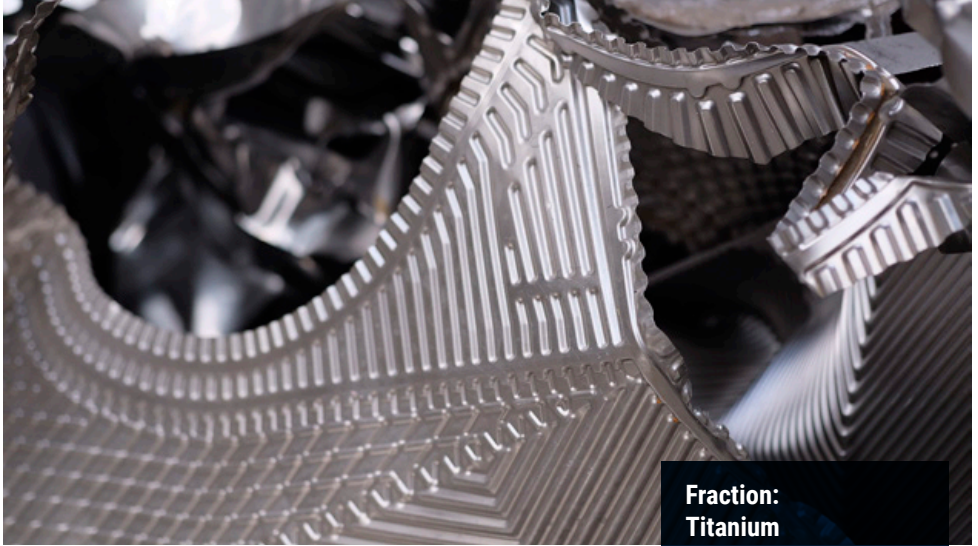
Description:
Zn

Description

- All types of Zinc Die Cast

Refer to points A) and B) of the general conditions.

Titanium



Fraction:
Titanium

Description:
Ti

Description

- Alloy 6-4
- Alloy 6-2
- Alloy CP

Refer to points A) and B) of the general conditions.

Low Alloy Arisings



Fraction:
Low Alloys

Description:
LA

Description

- New/old arisings
- Production Equipment
- Turnings

Refer to points A) and B) of the general conditions.

Stainless Steel Arisings



Fraction:
Stainless Steel

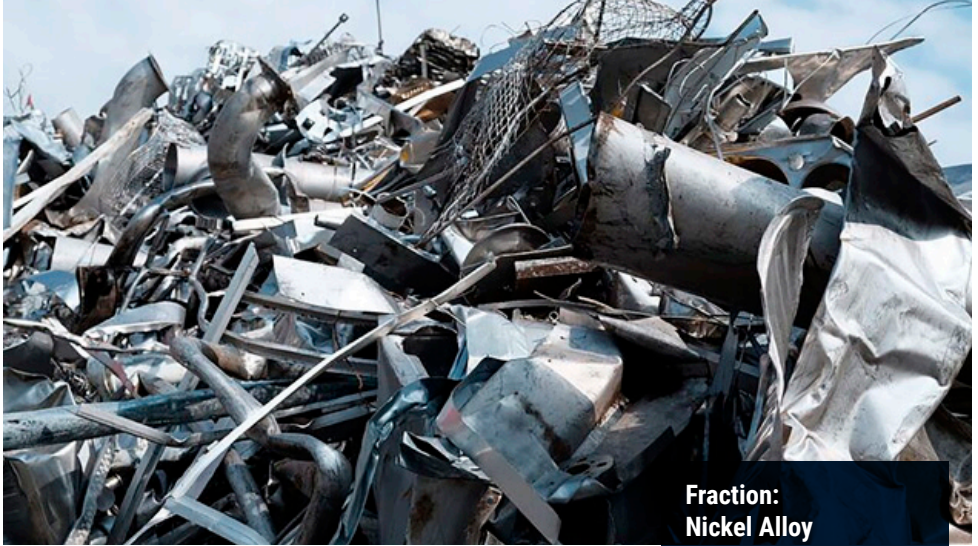
Description:
SST

Description

- New/old arisings
- Production Equipment
- Turnings

Refer to points A) and B) of the general conditions.

Nickel Alloy Arisings



Fraction:
Nickel Alloy

Description:
N

Description

- Inconel
- Incoloy
- Hastelloy
- Monel
- Nimonic
- Haynes
- Nickel

Refer to points A) and B) of the general conditions.

Catalytic Converters



Fraction:
Catalytic Converters

Description:
Satool

Description

- All producers and models are accepted

Refer to points A) and B) of the general conditions.

Stainless Incinerated Steel Scrap



Fraction:
Incinerated

Description:
ST304MV

Description

Fragmentised stainless incinerated steel scrap
– processed through an incinerating plant.

Reception of Goods

Reception Control

RIMECO controls all goods on arrival. All goods to be weighed in by sworn weighbridge. At reception of finished scrap products personnel must ensure that the goods are sorted according to specifications below.

Claim

All major deviances must be documented by means of digital photos. Claims for which material must be taken to landfill, this must be agreed with suppliers. Costs for landfill according to official rate at supplier's account.

Negative List

At Rimeco we do not wish to buy goods as mentioned on this page:

- **Must reject**
- **Can reject**

Must reject

1. Radioactive steel scrap
(flow measurers, ion measurers)
2. Insulated steel pipes
(due to risk of fire in the shredder)
3. Tyre wire
4. Pressure vessels / closed objects
(unless already cut)
5. Acetylene bottles in whatever condition
(risk of fire in shredder)
6. Products contaminated with food or industrial waste
7. Uncleaned oil tanks
8. Slag or slag byproducts
9. Steriles

Can reject

1. Steel wire, prestretched steel
(cutting costs higher than material value)
2. Material which in general is oversize
3. Material which is non-conform to the contract
4. Blended materials

Quality of Goods

A) Safety

All grades shall exclude:

1. Pressurised, closed or insufficiently open containers of all origins which could cause explosions. Containers or pressure vessels shall be considered as in sufficiently open where the opening is not visible or is less than 10 cm in any on direction;
2. Dangerous material, inflammable or explosive, fire arms (whole or in part), ammunitions, dirt or pollutants which may contain or emit substances dangerous to health or to the environment or to the steel production process;
3. Hazardous radioactive material:
 - Material presenting radioactivity in excess of ambient level of radioactivity - Radioactive material in sealed containers even if no significant exterior radioactivity is detectable due to shielding or due to the position of the sealed source in the scrap delivery.

B) Steriles (Cleanness)

All grades shall be free of:

1. all but negligible amounts of other non ferrous metals and non metallic materials, earth, insulation, excessive iron oxide in any form, except for nominal amounts of surface rust arising from outside storage of prepared scrap under normal atmospheric conditions.
2. All grades shall be free of all but negligible amounts of combustible non metallic materials, including, but not limited to rubber, plastic, fabric, wood, oil, lubricants and other chemical or organic substances.
3. All scrap shall be free of larger pieces (brick-size) which are non-conductors of electricity such as tires, pipes filled with cement, wood or concrete.
4. All grades shall be free of waste or of byproducts arising from steel melting, heating, surfaceconditioning (including scarfing) grinding, sawing, welding and torch cutting operations, such as slag, mill scale, baghouse dust, grinder dust, and sludge.

What we buy:

RIMECO A/S buy various grades of non-ferrous:

- Aluminum Wheels
- Aluminum Turnings
- Aluminum Copper Radiators
- Aluminum Extrusion
- Aluminum Radiators
- Old Rolled Aluminum
- Cast Aluminum
- Zorba Scrap
- Brass
- Electric Motors
- Lead
- Household Cable
- Mixed Stainless Steel
- Brass Copper Radiators
- Copper Tanks
- Dry Bright Wire
- New Copper Tube
- Painted Copper Tube
- Aluminum Copper Radiators
- Steel Armored Copper Cable
- Catalytic converter
- Precious Metals

What We Don't Buy

Due to environmental restrictions and local and state law, we are unable to recycle the following items at our facility:

- Vehicles
- AC, refrigeration, freezers
- Sealed Tanks
- Engines
- Transmissions
- TV or Monitors
- Railroad Materials
- Beer Kegs
- Ammunitions
- Sealed Units
- Metals Contaminated with: glass, wood, grease, oil, foam, plastic or other foreign material
- Steel Storm Grates
- Cemetery markers or vases
- Historical markers
- Roadway signs
- Public utility materials
- Hazardous materials
- Laptops
- Copiers/printers
- Computer boards
- Power supply boxes



RIMECO AKTIESELSKAB

Skibbroen 20 · P.O. Box 77

DK-6200 Aabenraa

+45 74 62 03 00

info@rimeco.dk

www.rimeco.dk

