

---

# Specification. Steel Scrap



# In the Recycling Business **since 1888.**

---



***RIMECO is a 5th generation, family owned company with a solid history of innovation and expertise. As a reliable and flexible partner, we provide our customers with quality products and individual, quick service, 24/7.***

At RIMECO, we are committed to walking the talk and to maintaining our position as a global market player. 130 years of experience has given us a deep knowledge of the market and an extensive network, which we make available to you - for your benefit.

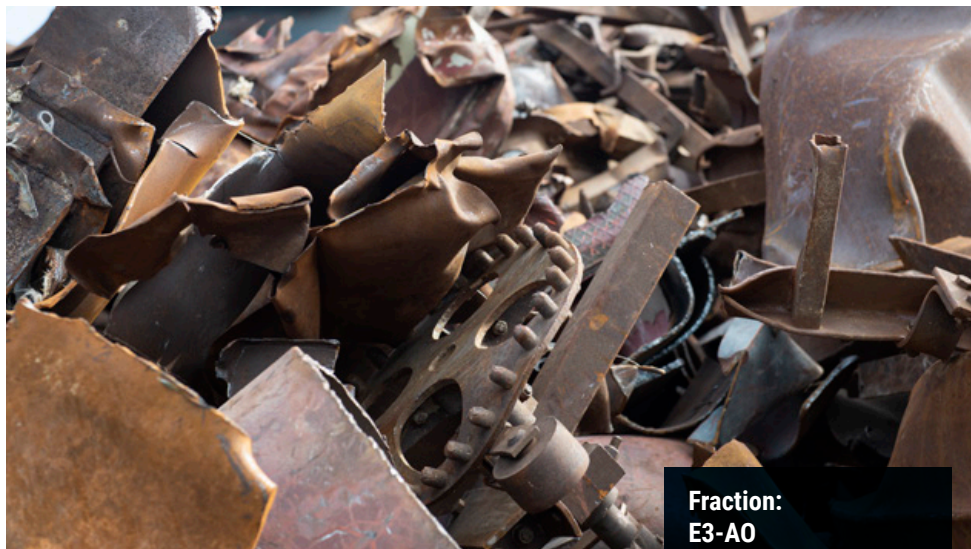
Besides trading quality raw materials, we plan, handle and execute large and small recycling projects solo or in partnerships. In any case, we promise you best-in-class products, clear communication, personal engagement, and goods delivered on time.

Our head office is located in Aabenraa, Denmark, with several facilities in Scandinavian. We work with the most experienced and skilled partners that meet our high standards.

Take a look at our products and services to see what we can do for you.

# Old Thick Steel Scrap

---



**Fraction:**  
**E3-A0**

**Description:**  
**HMS1 / E3 / Sorte 3**

## Description

Old thick steel scrap, predominantly **more than 6 mm thick in sizes not exceeding 1.5 x 0.5 x 0.5 m**, prepared in a manner to ensure direct charging.

May include tubes and hollow sections. Excludes vehicle body scrap and wheels from light vehicles. Must be free of rebars and merchant bars, free of metallic copper, tin, lead (and alloys), mechanical pieces and steriles to meet the aimed analytical contents.

Refer to points B) and C) of the general conditions.

# Old Thin Steel Scrap

---



**Fraction:**  
**E1 Steel Scrap**

**Description:**  
**HMS 1-2 / E1 / Sorte 1**

## Description

Old thin steel scrap predominantly **less than 6 mm thick in sizes not exceeding 1.5 x 0.5 x 0.5 m**, prepared in a manner to ensure direct charging. If greater density is required, it is recommended that maximum 1 meter is specified.

May include light vehicle wheels, but must exclude vehicle body scrap and domestic appliances.

Must be free of rebars and merchant bars, free of metallic copper, tin, lead (and alloys), mechanical pieces and steriles to meet the aimed analytical contents.

Refer to points B) and C) of the general conditions.



# Old Unprocessed Steel Scrap of Different Size

---



**Fraction:**  
**Frag Feed**

**Description:**  
**Frag. Feed**

## Description

**MAXIMUM thickness 6 mm**

There must be no heavy steel parts like spindles for lathe, heavy construction steel, forks etc. as they can cause damage to equipment. Splinters, incinerators and tires are not allowed. Frag feed usually consist of municipal iron, radiators, roof tiles, frames, tanks (blank), hoods, cages, cars (environmentally treated), white goods, etc.

3% impurities can be accepted - but not steriles, industrial waste, soil, household waste, tyres, plastic etc.

# New Production Steel Scrap

---



**Fraction:**  
**New Production Scrap**

**Description:**  
**E2 / Sorte 2 /**  
**Oxycoupage**

## Description

**MINIMUM thickness 6 mm. MAXIMUM size 1,5 x 0,5 x 0,5 m**

Steriles are not accepted.

Thick new production steel scrap predominantly more than 6mm thick prepared in a manner to ensure direct charging. The steel scrap must be uncoated unless permitted by joint agreement and be free of rebars and merchant bars even from new production. Must be free of metallic copper, tin, lead (and alloys), mechanical pieces and steriles to meet the aimed analytical contents.

Refer to points B) and C) of the general conditions.

# New Steel Scrap from Production

---



**Fraction:**  
**New Steel Scrap**

**Description:**  
**E2/E8**

## Description

**No thickness requirement**

**MAXIMUM size for the steelmill 1,5 x 0,5 x 0,5 m**

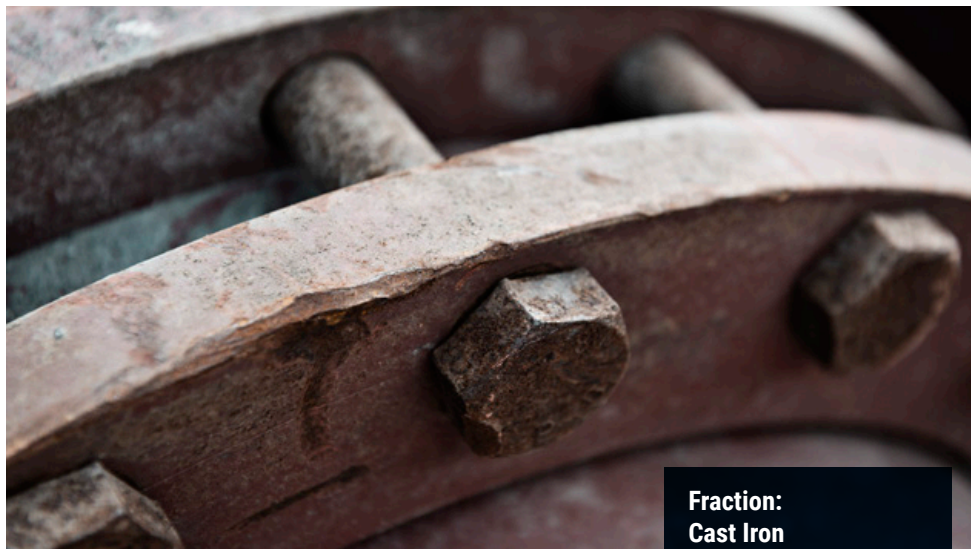
Steriles are not accepted. Thin new production steel scrap predominantly less than 3mm thick prepared in a manner to ensure direct charging. The steel scrap must be uncoated unless permitted by joint agreement and be free of unbound ribbons to avoid trouble when charging. Must be free of metallic copper, tin, lead (and alloys), mechanical pieces and steriles to meet the aimed analytical contents.

Refer to points B) and C) of the general conditions.



# Cast Iron Scrap

---



Fraction:  
Cast Iron

Description:  
Cast Iron

## Description

**MINIMUM thickness 3mm for items & 8mm for pipes**

**MAXIMUM sizes 1,5 x 0,5 x 0,5 m (sales)**

Combustion engines are not allowed, the items must be free of grease, oil, bearings, rent houses, linings and the like, which in the worst case can cause explosions, thicknesses should preferably be above 25 mm to ensure low phosphorus content (sales).

**MAXIMUM piece weight 1 ton.**

# Steel Turnings

---



**Fraction:**  
**Steel Turnings**

**Description:**  
**E5 / Sorte 6**

## Description

Iron chips may NOT contain plates, slag, grinding dust, gravure, moisture and similar materials. The iron shavings must appear as a homogeneous product, dry (free of cutting agents), without visible impurities.

Cast iron and steel chips shall be delivered in separate lots. No blending allowed.

# New Thin Black Steel Scrap from Production

---



**Fraction:**  
**NPS**

**Description:**  
**E8 / Sorte 8 /**  
**Bushelling**

## Description

**MAXIMUM thickness 3 mm**

**MAXIMUM size 1,5x0,5x0,5m**

Steriles are not accepted. Thin new production steel scrap predominantly less than 3 mm thick prepared in a manner to ensure direct charging. The steel scrap must be uncoated unless permitted by joint agreement and be free of unbound ribbons to avoid trouble when charging. Must be free of metallic copper, tin, lead (and alloys), mechanical pieces and steriles to meet the aimed analytical contents.

Refer to points B) and C) of the general conditions.

# The Making of an International Recycling Company

---

*Since 1888 RIMECO has held a solid position in the recycling trade and remains one of the larger recycling businesses in Scandinavia. The combined historical experience and current activities of the company make it a strong player in future international recycling business.*

## **FOUNDATION**

RIMECO can be traced back to 1888, when the Riggelsen family founded a trade and recycling business. The name RIMECO was created in July 1988 when our domestic recycling activities were sold.

## **EXPANSION**

Following the death of Peter Fr. Riggelsen (1884-1951), the company was converted into a shareholding company, P. Riggelsen A/S, which was owned by his two sons Hans Mathias Riggelsen (1923-1977) and Peter Riggelsen senior (1927-2005). H.M. Riggelsen managed the Toender branch and from 1951 Peter Riggelsen senior managed the Aabenraa branch.



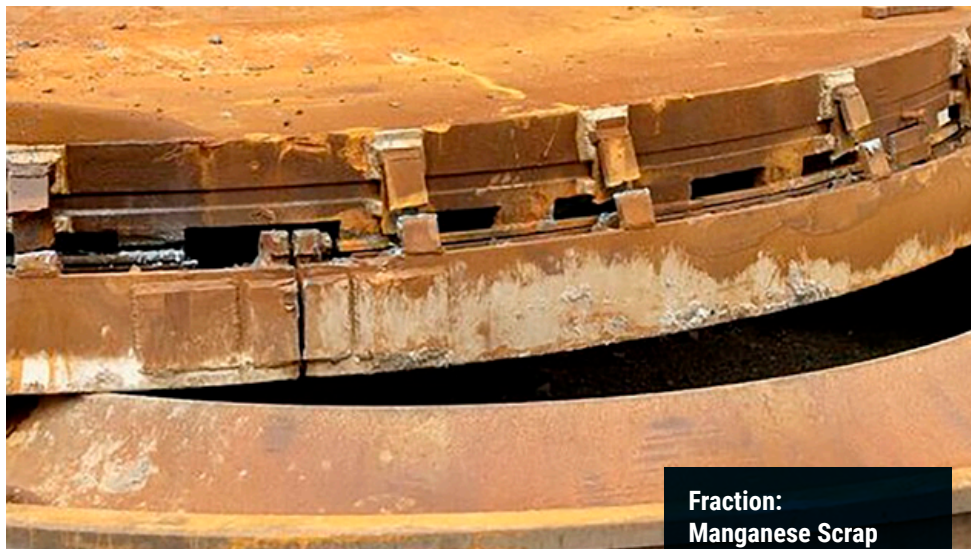


## **INTERNATIONALISATION**

- In 1975, Peter Riggelsen (1951 - ), son of Peter Riggelsen senior and the fourth generation of the family business, joined the company and started the international era of the family company.
- In July 1988 when our domestic recycling activities were sold, the focus was to develop the international trading activities, which today has lead us to the solid foundation in Scandinavia, Baltic states and Russia.
- In July 2005 the company was sold partly to the german company group ELG Haniel, who became shareholder in 2011.
- In July 2012, Klaus Peter Riggelsen, the fith generation (1976 - ) became shareholder and owner of RIMECO in accordance with a agreement wih ELG Haniel. The future is set for expansion of the RIMECO Group.

# Manganese Scrap

---



Fraction:  
Manganese Scrap

Description:  
MN Scrap

## Description

**Manganese scrap, preferably not more than 0,5 tons per.**

single part Items must be free from rubber, grease and oil. May contain wear parts such as chains, bells, shovels, hammers and the like from heavy industry, iron scarves, hardened teeth from excavators.

# Foundry, New Steel Scrap from Production

---



**Fraction:**  
**NARS**

**Description:**  
**Small E2 / Sorte 2**

## Description

**MINIMUM thickness 6 mm MAXIMUM size 0,4x0,4x0,4m**

Thick new production steel scrap predominantly more than 6mm thick prepared in a manner to ensure direct charging. The steel scrap must be uncoated unless permitted by joint agreement and be free of rebars and merchant bars even from new production. Must be free of metallic copper, tin, lead (and alloys), mechanical pieces and steriles to meet the aimed analytical contents.

Refer to points B) and C) of the general conditions.

Oversize will not be accepted at all.



# Foundry, New Thin Plate Scrap

---



**Fraction:**  
**New Thin Plate Scrap**

**Description:**  
**E6 / Sorte 6**

## Description

**MAXIMUM thickness 3 mm**

**No special requirements for lengths should be able to be squeezed in packages**

**MAXIMUM size 0,4x0,4x0,4 m (sales)**

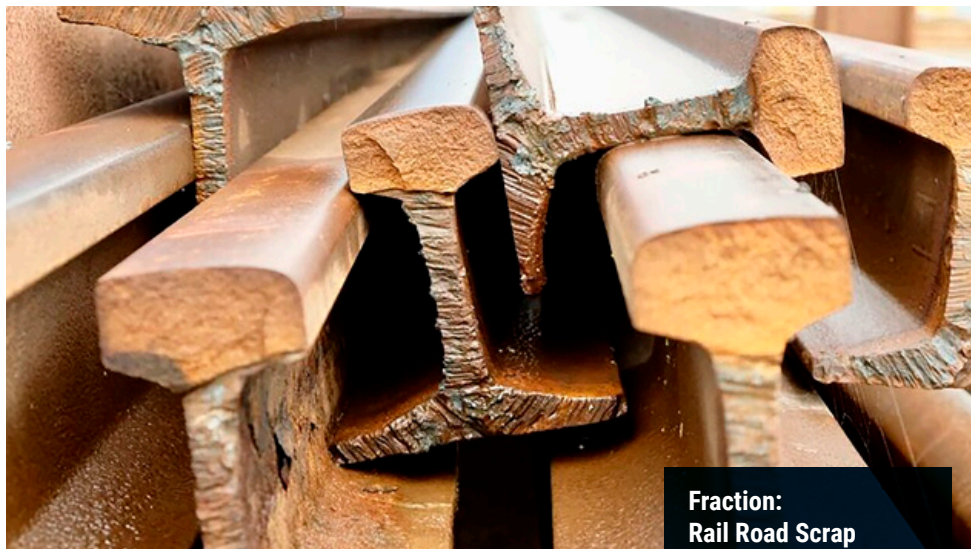
Steriles are not accepted. New production thin steel scrap (less than 3mm thick) compressed or firmly baled in a manner to ensure direct charging. The steel scrap must be uncoated unless permitted by joint agreement. Must be free of metallic copper, tin, lead (and alloys), mechanical pieces and steriles to meet the aimed analytical contents.

Refer to points B) and C) of the general conditions.



# Rail Road Scrap

---



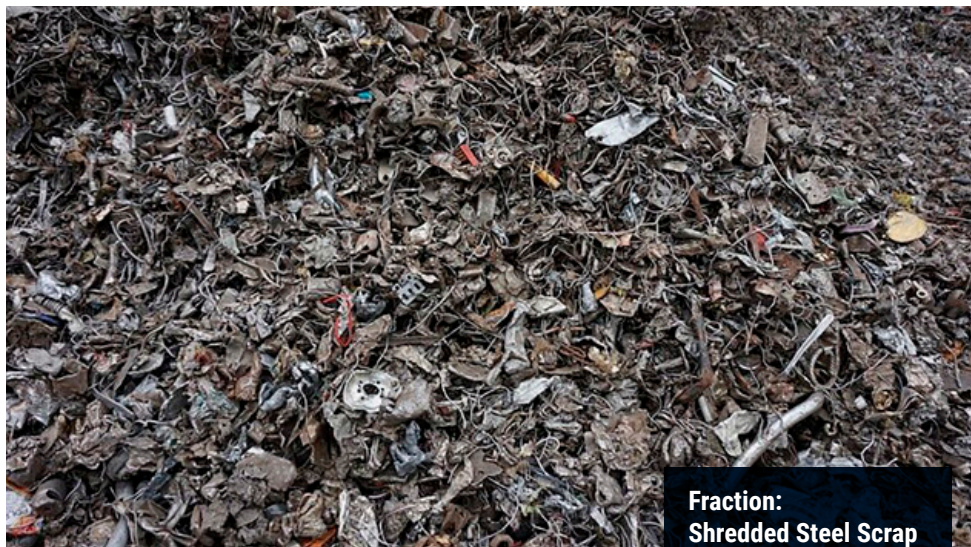
**Fraction:  
Rail Road Scrap**

## Description

Can normally be accepted in size up to 600 mm, but the standard is 400 mm. Screws / spikes / under plates is not allowed. Rail changers / crossings are only allowed subject to an separate agreement.

# Shredded Steel Scrap E40

---



**Fraction:**  
**Shredded Steel Scrap**

**Description:**  
**E40**

## Description

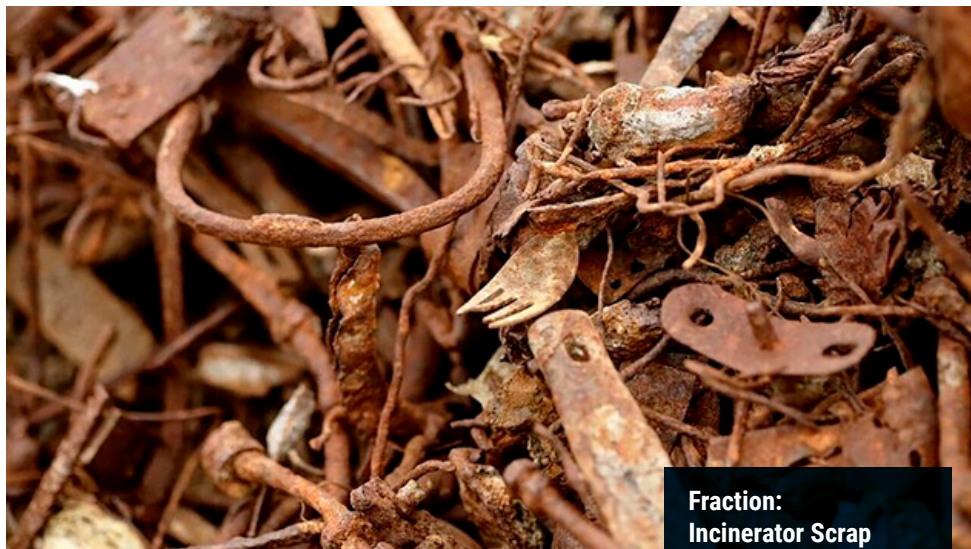
Shredded steel scrap. Old steel scrap fragmentized into pieces not exceeding 200 mm in any direction for 95 % of the load. No piece, in the remaining 5 %, shall exceed 1000 mm. Should be prepared in a manner to ensure direct charging. The scrap shall be free of excessive moisture, loose cast iron and incinerator material (especially tin cans).

Must be free of metallic copper, tin, lead (and alloys) and steriles to meet the aimed analytical contents.

Refer to points B) and C) of the general conditions.

# Incinerator Scrap E46

---



**Fraction:**  
**Incinerator Scrap**

**Description:**  
**E46**

## Description

Fragmentised incinerator scrap. Loose steel scrap processed through an incinerating plant for household waste followed by magnetic separation, fragmentised into pieces not exceeding 200 mm in any direction and consisting partly of tin coated steel cans. Should be prepared in a manner to ensure direct charging. The scrap shall be free of excessive moisture and rust. Must be free of excessive metallic copper, tin, lead (and alloys) and steriles to meet the aimed analytical contents.

Refer to points B) and C) of the general conditions.





# Reception of Goods

---

## ***Reception Control***

RIMECO controls all goods on arrival. All goods to be weighed in by sworn weighbridge. At reception of finished scrap products personnel must ensure that the goods are sorted according to specifications below.

## ***Claim***

All major deviances must be documented by means of digital photos. Claims for which material must be taken to landfill, this must be agreed with suppliers. Costs for landfill according to official rate at supplier's account.

## ***Negative List***

At Rimeco we do not wish to buy goods as mentioned on this page:

- **Must reject**
- **Can reject**

## ***Must reject***

1. Radioactive steel scrap  
(flow measurers, ion measurers)
2. Insulated steel pipes  
(due to risk of fire in the shredder)
3. Tyre wire
4. Pressure vessels / closed objects  
(unless already cut)
5. Acetylene bottles in whatever condition  
(risk of fire in shredder)
6. Products contaminated with food or industrial waste
7. Uncleaned oil tanks
8. Slag or slag byproducts
9. Steriles

## ***Can reject***

1. Steel wire, prestretched steel  
(cutting costs higher than material value)
2. Material which in general is oversize
3. Material which is non-conform to the contract
4. Blended materials

# Quality of Goods

---

## **A) Safety**

1. Pressurised, closed or insufficiently open containers of all origins which could cause explosions. Containers or pressure vessels shall be considered as in sufficiently open where the opening is not visible or is less than 10 cm in any on direction;
2. Dangerous material, inflammable or explosive, fire arms (whole or in part), ammunitions, dirt or pollutants which may contain or emit substances dangerous to health or to the environment or to the steel production process;
3. Hazardous radioactive material:
  - Material presenting radioactivity in excess of ambient level of radioactivity - Radioactive material in sealed containers even if no significant exterior radioactivity is detectable due to shielding or due to the position of the sealed source in the scrap delivery.

## **B) Steriles (Cleanness)**

All grades shall be free of all but negligible amounts of other non ferrous metals and non metallic materials, earth, insulation, excessive iron oxide in any form, except for nominal amounts of surface rust arising from outside storage of prepared scrap under normal atmospheric conditions.

All grades shall be free of all but negligible amounts of combustible non metallic materials, including, but not limited to rubber, plastic, fabric, wood, oil, lubricants and other chemical or organic substances.

All scrap shall be free of larger pieces (brick-size) which are non-conductors of electricity such as tires, pipes filled with cement, wood or concrete. All grades shall be free of waste or of by-products arising from steel melting, heating, surface-conditioning (including scarfing) grinding, sawing, welding and torch cutting operations, such as slag, mill scale, baghouse dust, grinder dust, and sludge.

### ***C) residual and other Metallic Elements***

#### ***Copper***

All grades shall be free of visible metallic copper which means free of copper – wound electric motors, sheets and copper coated materials, bearing shells, winding, and radiator cores.

All grades shall be free of all but negligible amounts of wire, insulated wire and cable tubing and other copper, brass items mixed with, attached to, or coating ferrous scrap.

All grades shall be free of material with high dissolved copper content such as rebars and merchant bars which will be grouped in the high residual grades.

#### ***Tin***

All grades shall be free of tin in any forms such as tin cans, tin coated materials etc. as well as bronze elements such as rings, bearing shells etc.

#### ***Lead***

All grades shall be free of lead in any forms such as batteries, solder, wheel weights,terne plate, cable ends, bearings, bearing shells etc.

#### ***Chromium, Nickel, Molybdenum***

All grades shall be free of alloy steels and stainless steels as well as of mechanical parts (which mainly contain these elements) such as motors, drive gears for trucks, axles, gear boxes, gear wheels, tools and dies as well as nons magnetic pieces.



RIMECO AKTIESELSKAB

Skibbroen 20 · P.O. Box 77

DK-6200 Aabenraa

+45 74 62 03 00

[info@rimeco.dk](mailto:info@rimeco.dk)

[www.rimeco.dk](http://www.rimeco.dk)

