

Steel – Stocklist

15.10.2018

Used casing pipes and used conductor pipes

Declassified, nominal dimensions, length approx. 10-13 meters:



Dimension	Mtons
127 x 9-10 mm Drill pipe (reserved)	125*
244.5 x 10 mm	10
244.5 x 13.84 mm	25
630 X 10 mm (hole in wall)	20
762 X 38 mm incl 2 short pieces 3 and 5 m	150
* delivery week 41/42	

1st choice hot rolled steel plates

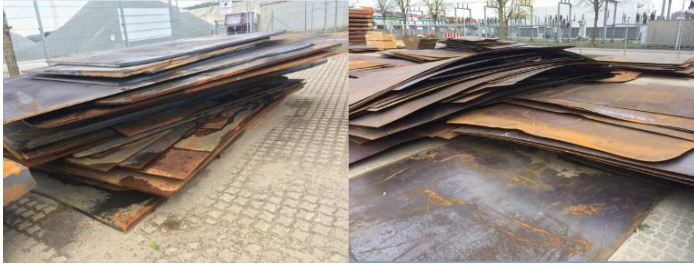
cut edges, with 3.1., CE-marked



Grade S235J2+N	Mtons
20 x 2000 x 6000 mm	100
25 x 2000 x 6000 mm	50
25 x 2000 x 6000 mm S355J2N (24 mm)	2.5

Hot rolled steel plates

declassified, mainly S235-S355, unsorted



Cat A

With:	Mainly 2000 - 3300 mm
Length:	Mainly 3000 - 12000 mm
Thickness	8-80 mm
Mtons	0



Cat B

With:	Mainly 2000 - 3300 mm
Length:	Mainly 3000 - 12000 mm
Thickness	5-15 mm
Mtons	25

Hot rolled steel plates 10 x approx 1100 x approx 4600-6900 mm

declassified, for floor plates, 'wrinkle' surface



Floor plates

Width:	Approx 1100 mm
Length:	Approx 4600 - 6900 mm
Thickness	10 mm
Mtons	22

Hot rolled steel bars, declassified, Grade VW4227:



Steel bars

Thickness	65 mm
Length:	Approx 7500 mm
Quantity:	50 Mtons

Prepainted coils on hot galv. basis

Overrollings/good second choice



Dimensions	KG	Color
0.50 x 1113 mm	3850	Grauweiss
0.50 x 1250 mm	2505	Signalweiss
0.51 x 1252 mm	4900	Reinweiss
0.52 x 1249 mm	3470	Signalweiss
0.53 x 1210 mm	1170	Schiefergrau
0.55 x 1178 mm	3410	Rotbraun
0.55 x 1178 mm	4640	Kupferbraun
0.57 x 1246 mm	3800	Reinweiss
0.57 x 1248 mm	2430	Reinweiss
0.57 x 1249 mm	2990	Reinweiss
0.60 x 1182 mm	1135	Weissalu
0.60 x 1238 mm	4325	Grauweiss
0.60 x 1254 mm	1445	Verkehrsweiss
0.60 x 1246 mm	3800	Weissalu
0.62 x 1225 mm	2505	Verkehrsgrau
0.62 x 1225 mm	2200	Verkehrsgrau
0.64 x 1253 mm	5482	Rotorange
0.70 x 1250 mm	1320	Graualu

Used mill rolls (reserved)

Chemical values available



Dimensions

Thickness:	Approx 600-650 mm. 2050 mm length at middle piece
Piece weight Mtons	Approx 7-8 Mtons 500-600 mtons

Steel beams

Declassified, used



Dimensions

With:	HEA 300
Length:	approx 3-12 meters
Mtons	21 Tons

Offshore chains

Declassified. Certs available, probably unused



Dimensions

With:	130 mm
Length:	approx 25 meters
Mtons	9 pcs. of approx 8 Mtons = approx 72 Mtons